



Cost: per student taxes are included

- 2 1/2 days = \$103
(minimum fee 20 kids per school \$2060)
- 1 1/2 days = \$75
(minimum fee 20 kids per school \$1500)
- Full Day (9am—7pm) = \$40
(minimum fee 20 kids per school \$800)

Fees include: 1 ABCA instructor, facility fees, and , 1resource personnel (for overnight groups only). Please note that **meals are not included** in this price.

Additional Program Fees:

- Fossil Program (Rock Glen C.A.): \$6.00
- Habitat Improvements: \$6.00 +tax/ kit

Contact Information:

Ausable Bayfield Conservation Authority

Julie Stellingwerff or Denise Iszczuk

RR#3, 71108 Morrison Line

Exeter, ON N0M 1S5

Phone: 519-235-2610 or 1-888-286-2610

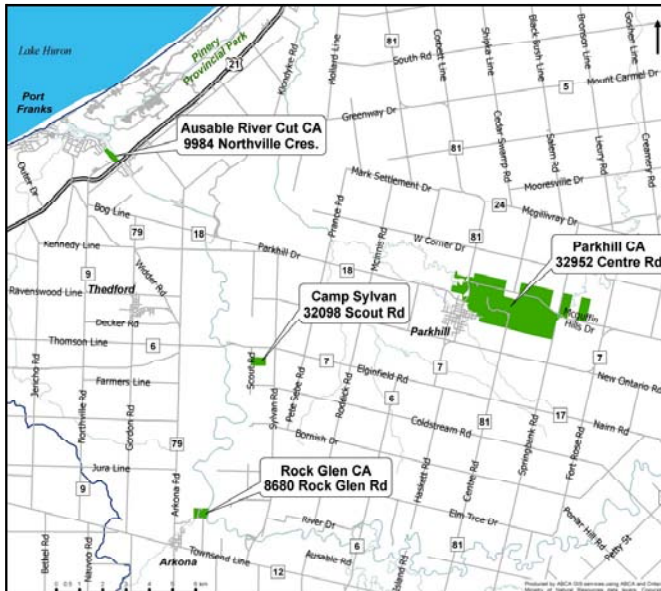
Fax: 519-235-1963

Email: info@abca.on.ca

Website: www.abca.on.ca

Location:

The Camp Sylvan property is 112 hectares in size with various natural ecosystems. Most of Camp Sylvan has been reforested. Natural features include several streams, a man-made pond, a beaver pond, scrubland, mature deciduous forests and several coniferous plantations (cedar, spruce, pine). A network of trails can be hiked within the property.



**2011
Program Info**

**Sylvan Conservation
Program
Since 1964!**



Ausable
Bayfield
Conservation
Authority



Program Descriptions:

Campfire: Songs, skits, games and stories are all part of the campfire program at Camp Sylvan. Classes are encouraged to prepare skits and songs before they come to camp to add to the campfire fun.

Eco-Hike: This introductory hike takes students through several different ecosystems at Camp Sylvan. Discover the difference between the ecosystems, as well as abiotic and biotic factors through props and live specimens.

Environmental Ethics: Acid rain, deforestation, climate change and much more are destroying the planet. Through hiking, games, video and art, students develop an appreciation of our natural resources and become aware of the stresses that humans impose on the natural environment.

Updated! Forestry: Camp Sylvan provides an ideal location for studying forest ecosystems. Through a series of hands-on activities students identify trees and examine issues affecting our forests and wildlife.

Fur Trader: Students are taken on a journey back in time to the historical fur trade in Canada. Through an active game, students must use their instincts and intelligence to find pelts to trade throughout the forest.

Go Wild (AKA: Survival): Students become connected with the forest ecosystem by role-playing herbivores, omnivores and carnivores in a simulated game of survival. Animals must find food and water while protecting themselves from predators and limiting factors. A Camp Sylvan tradition!



Wilderness Survival Skills



What's in the Water?

Habitat Improvements: Learn about Bluebirds and the success of the Bluebird nesting box programs. Armed with a hammer, nails and wood, students will safely build their very own Bluebird box to create suitable habitat. (Additional charge of \$6.00 + tax per kit).

Night Hike: Nightfall is a time for many animals to begin their day. Through an exciting owl prowl, students will gain an understanding of the adaptations of local nocturnal creatures.

Resource Speaker: Teachers can choose from a list of resource people to deliver a fascinating presentation on subjects ranging from Fossils to Bats and Astronomy.

What's In the Water?: Be prepared to get dirty, by exploring in the pond looking for and identifying aquatic species. Students will also investigate the physical and chemical parameters of the water system. Data collected is used to determine the overall health of the aquatic ecosystem.

Which Way Do I Go?: After learning the parts of a compass and how to use a compass, in partners, students venture out on the orienteering course which winds it's way through the Sylvan property.

Wilderness Survival Skills: A hands-on program teaching students basic survival skills, including; what to pack for hiking in the outdoors, how to construct a shelter, purify water and build a fire using one match.

Programs are developed and led by Conservation Authority staff, volunteer Junior Leaders and Resource Educators. The teachers' responsibilities include student preparation and providing necessary discipline for the duration of the stay at Camp Sylvan.