

The plant life is typical of the region, featuring pine and spruce trees, along with many varieties of deciduous species. The predominant deciduous trees are beech and maple, but others may be seen, and indeed, many other species have been planted in the area. Wildflowers are also common and can be seen everywhere, especially in the grassy fields at the beginning and turnaround of the trails. The animals in the Clinton Conservation area are often small, such as rabbits or mice, as well as other rodents. The Bayfield River contains crayfish, rock bass, carp, and occasionally salmon. Have fun fishing the river, but please release out-of-season species.

At the Ausable Bayfield Conservation Foundation Commemorative Woods, trees are planted to commemorate people and important events in their lives. To make a donation, contact the Foundation at the ABCA office.

The trails in the Clinton Conservation Area take about 45 minutes to walk, and this time will be extended slightly by using the fitness equipment or by stops to appreciate your surroundings. The trails themselves are grass, and they are maintained throughout the non-winter months. The walk is pleasant and peaceful, although there are a few hills

Rules for use of the Conservation Area

- Check the sign board for permitted uses.
- Promote safe and responsible trail use.
- Be courteous and share the trail with other users.
- Stay on the marked trail and don't create new ones.
- Place litter in the provided receptacles.
- Park only in designated areas.
- Dogs must be kept on a leash no longer than 2 metres (6 feet). Clean up after your pet.
- Do not injure, damage, or remove any plant, animal, or structure.
- Report vandalism and incidents to the ABCA.
- Horses, motorized vehicles and bicycles of any kind are not permitted.
- Campfires are not permitted.
- Hunting and camping are prohibited.

The ABCA owns 9,500 acres of land for environmental purposes. To learn more about these island of nature, visit the ABCA office or website.

A U S A B L E B A Y F I E L D
C O N S E R V A T I O N
A U T H O R I T Y

71108 Morrison Line
Exeter, ON
N0M 1S5

Tel: (519) 235-2610
Toll-Free: 1-888-286-2610
Fax: (519) 235-1963
www.abca.on.ca

**BUILDING BETTER
ENVIRONMENTAL CONSCIENCE**

Clinton Conservation Area



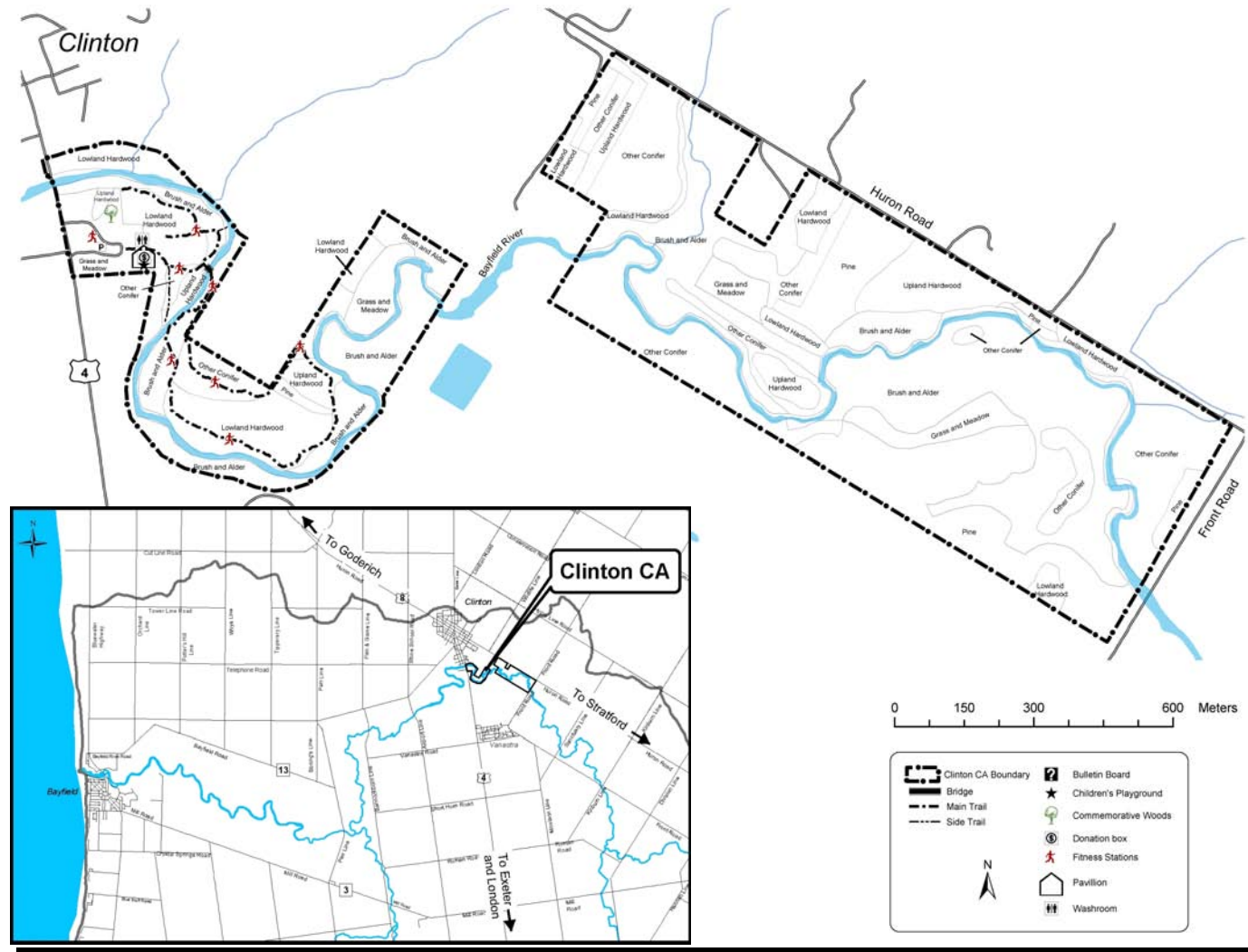
77690 London Road
Clinton, ON

A U S A B L E B A Y F I E L D
C O N S E R V A T I O N
A U T H O R I T Y

Take Only Pictures, Leave Only Footprints

Welcome to the Clinton Conservation Area. Please enjoy your visit and please respect the area so others may enjoy it also. If you are interested in observing the wildlife, dawn and dusk are the best times to see the animals. Birds may be seen at various times throughout the day. Please observe wildlife from a distance and let them go about their activities— you're visiting their home.

The Clinton Conservation Area is made up of two properties: the Clinton Conservation Area and the Van Gastel property. The land was purchased from five landowners over three years starting in 1973. These owners were the Corrie, Mayer, Christensen, Hough, and Van Gastel families. The Ausable Bayfield Conservation Authority owns 250 acres for recreation and nature appreciation in the Clinton Conservation Area, and for reforestation and wildlife habitat on the Van Gastel property.



The Clinton Lions Club has adopted the park as a community project and looks after the maintenance, picnic, and playground facilities. The ABCA thanks them for their efforts.

AUSABLE BAYFIELD
CONSERVATION
AUTHORITY

Please help us support this area.
Cheques can be mailed to the
ABCA office.

The ABCA provides tax receipts
for contributions over \$10.