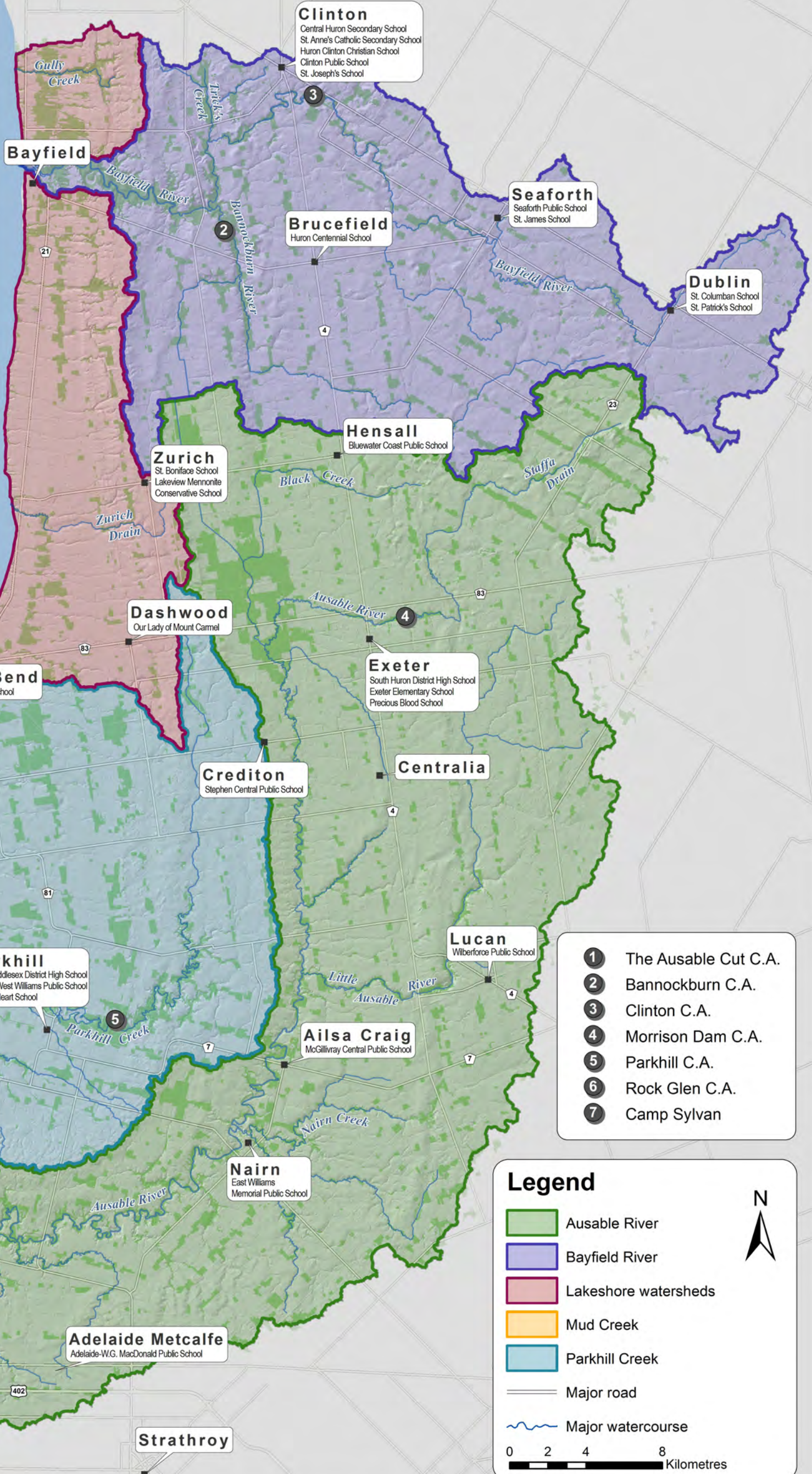


Document Path: Y:\GIS\Projects\_Mxds\Education\EducationPamphlet2014\Education\_Pamphlet\_Map\_2014\_v2.mxd  
 Produced by ABCA GIS Services. This map has been compiled from various sources and is for information purposes only. Sources of data include, but are not limited to: Land Information Ontario under OGDE license, ESRI, ABCA data and data sublicensed from member municipalities. Ausable Bayfield Conservation Authority takes no responsibility for, nor guarantees, the accuracy of all the information contained within the map.  
 Copyright (c) Queen's Printer.



**Clinton**  
 Central Huron Secondary School  
 St. Anne's Catholic Secondary School  
 Huron Clinton Christian School  
 Clinton Public School  
 St. Joseph's School

**Bayfield**

**Brucefield**  
 Huron Centennial School

**Seaforth**  
 Seaforth Public School  
 St. James School

**Dublin**  
 St. Columban School  
 St. Patrick's School

**Zurich**  
 St. Boniface School  
 Lakeview Mennonite  
 Conservative School

**Hensall**  
 Bluewater Coast Public School

**Dashwood**  
 Our Lady of Mount Camel

**Exeter**  
 South Huron District High School  
 Exeter Elementary School  
 Precious Blood School

**Grand Bend**  
 Grand Bend Public School

**Crediton**  
 Stephen Central Public School

**Centralia**

**Port Franks**

**Lucan**  
 Wilberforce Public School

**Parkhill**  
 North Middlesex District High School  
 Parkhill-West Williams Public School  
 Sacred Heart School

**Theford**  
 Bosanquet Central Public School

**Ailsa Craig**  
 McGillivray Central Public School

**Arkona**

**Nairn**  
 East Williams  
 Memorial Public School

**Adelaide Metcalfe**  
 Adelaide-W.G. MacDonald Public School

**Strathroy**

- ① The Ausable Cut C.A.
- ② Bannockburn C.A.
- ③ Clinton C.A.
- ④ Morrison Dam C.A.
- ⑤ Parkhill C.A.
- ⑥ Rock Glen C.A.
- ⑦ Camp Sylvan

**Legend**

- Ausable River
- Bayfield River
- Lakeshore watersheds
- Mud Creek
- Parkhill Creek
- Major road
- Major watercourse

